

4

3

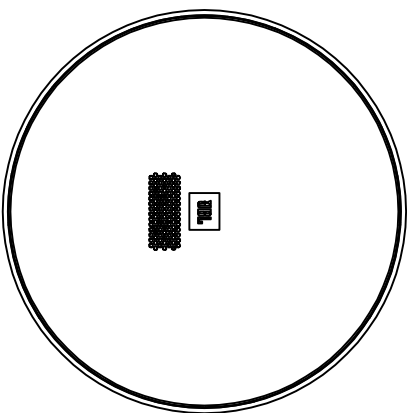
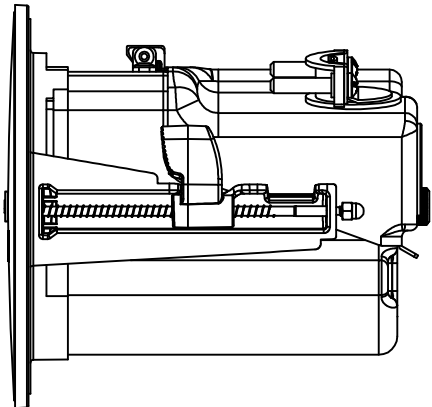
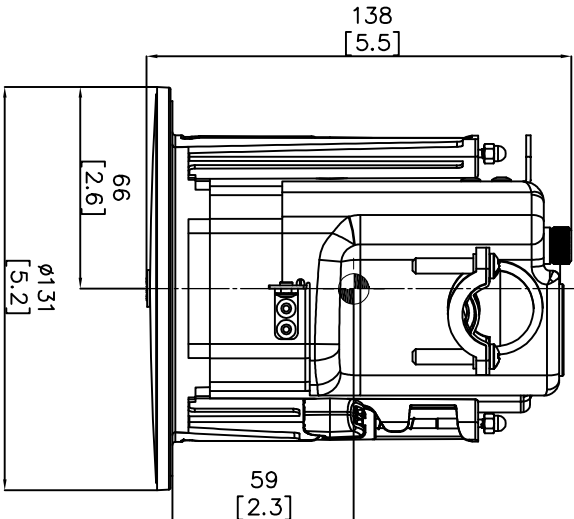
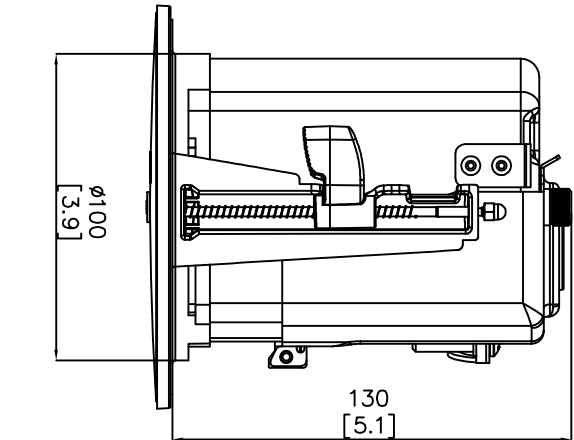
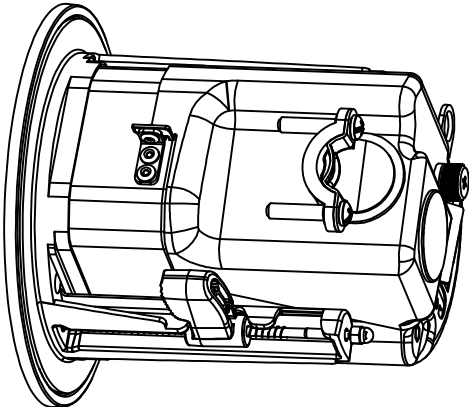
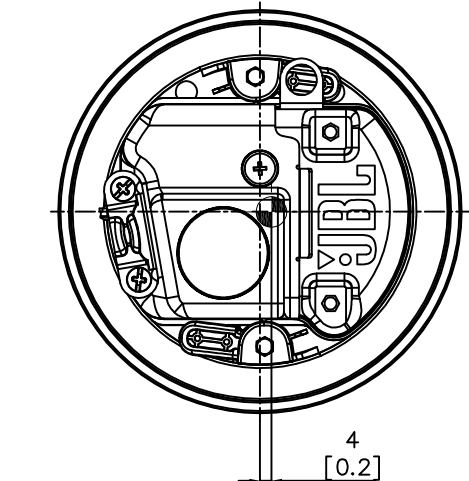
2

1

THESE DRAWINGS AND SPECIFICATIONS ARE THE PROPERTY OF JBL, INCORPORATED. THEY ARE ISSUED IN STRICT CONFIDENCE AND SHALL NOT BE REPRODUCED OR USED AS THE BASIS FOR MANUFACTURE OR APPARATUS WITHOUT WRITTEN PERMISSION.

ALL MATERIAL SPECIFIED ON THIS DRAWING SHALL CONTINUALLY COMPLY WITH THE EFFECTIVE EU R&DS DIRECTIVE, CURRENTLY 2011/65/EU, INCLUDING ALL AMENDMENTS.

REVISIONS			
LTR	DESCRIPTION	DRAFT	DATE
A	INITIAL RELEASE	XX	XX/XX/XX



TOLERANCES	
(UNLESS OTHERWISE SPECIFIED)	
XXX	± .063 INCH
XX	± .125 INCH
ANGULAR TOLERANCE OF 0°-90°	
FRACTIONAL DIMENSIONS ± 1/32	
* DIMENSIONS ARE MM (INCHES)	
* ALL DIMENSIONS ARE FINISHED DIMENSIONS	
* DO NOT SCALE DRAWING	

A

B

C

D

A

B

C

D

5. SYMBOL INDICATES CENTER OF GRAVITY (CG).
4. GRILLE MATERIAL: ABS+PA+SPCE
3. WEIGHT: 1.15KG (2.54 LBS).
2. FINISH: BAFFLE: MOLD TEXTURE; BACK CAN: POWDER COATING BLACK.
1. CABINET MATERIAL: BAFFLE: PC+ABS; BACK CAN: SPCE

NOTES: (UNLESS OTHERWISE SPECIFIED)

4

3

2

1

HARMAN			
JBL Professional 8500 Balboa Blvd Northridge, CA 91329 USA			
TITLE CUSTOMER DRAWING:C442C/T			
SIZE A	DRAWING NO. 1000382442	REV A	SCALE NTS
SHEET 1		OF 1	